

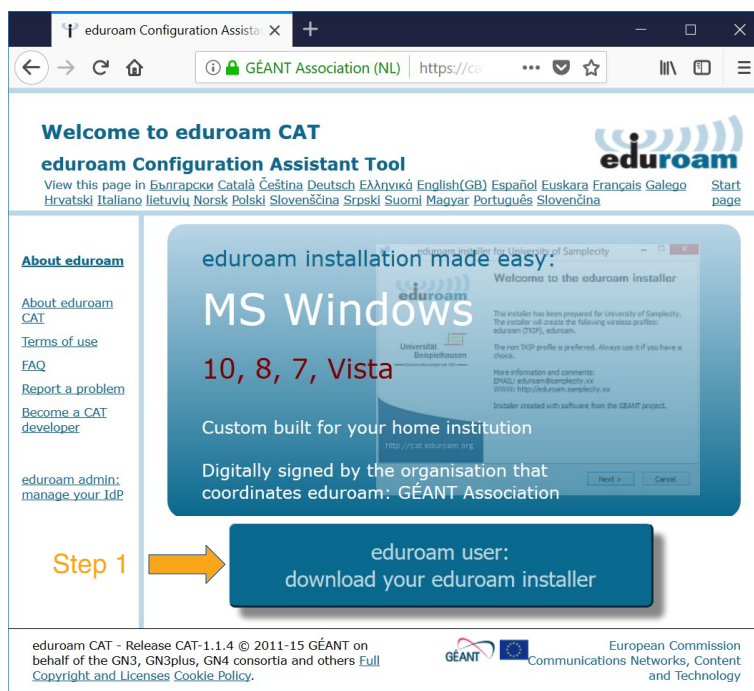


WARNING: This guide is for Microsoft Windows 10. Screenshots and some steps could differ for Microsoft Windows Vista, 7, 8 and 8.1 but the basics are the same.

1. Guided configuration with the eduroam Configuration Assistant Tool (eduroam CAT)

1.1. Opening the website with the eduroam CAT application

Connect to the internet using mobile data or Wi-Fi in a café, restaurant, supermarket or at home. Open a browser (Microsoft Edge, Firefox, Chrome etc.) and go to the website **<https://cat.eduroam.org>**, then continue by clicking on the button **eduroam user: download your eduroam installer** (screenshot 1).

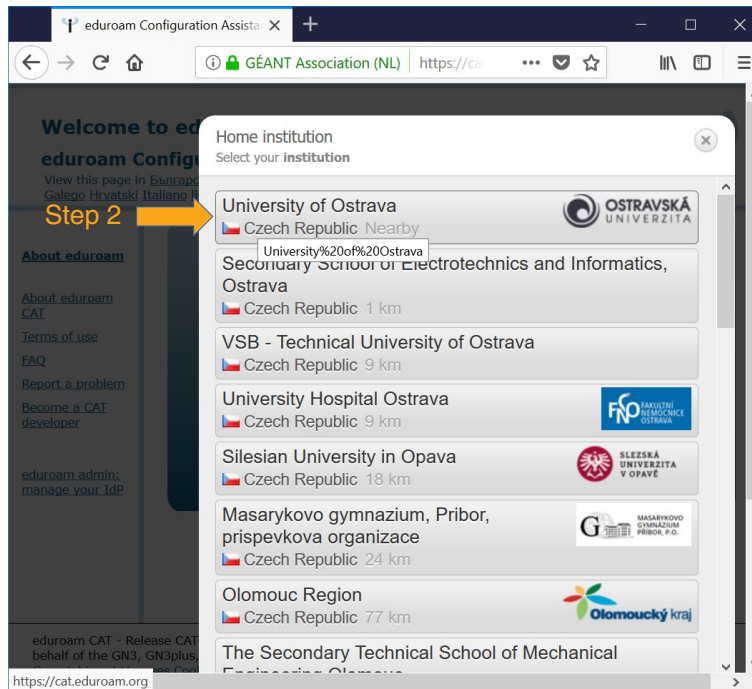


Screenshot 1

1.2. Selection of home institution

If you are a regular student of the University of Ostrava, your home institution will be the University of Ostrava. If your home institution is a different one, you will have to use an eduroam account from your home institution and abide by its rules and guides.

Select your home institution (**University of Ostrava**) from the list (screenshot 2).

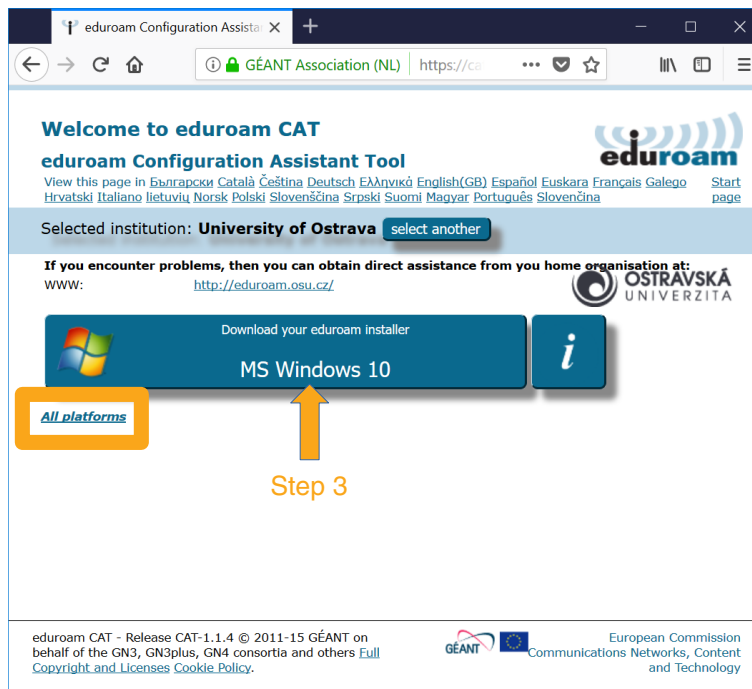


Screenshot 2

1.3. Selection of operating system

You can select and download the **eduroam CAT** application for different operating systems, save it to e.g. a USB flash disk and run it on another device without a configured internet connection. Follow the link **All platforms** to do this (this is an optional step).

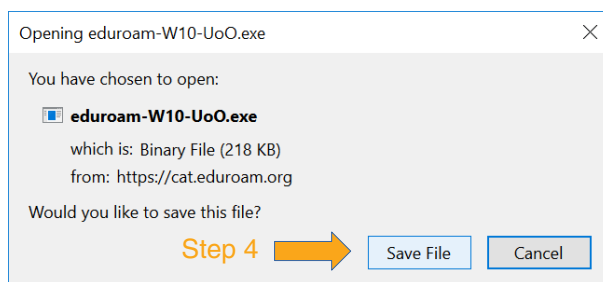
If the automatically detected operating system is correct, continue by clicking on the **Download your eduroam installer MS Windows 10** button (screenshot 3).



Screenshot 3

1.4. Downloading

Proceed to the download process (screenshot 4).



Screenshot 4

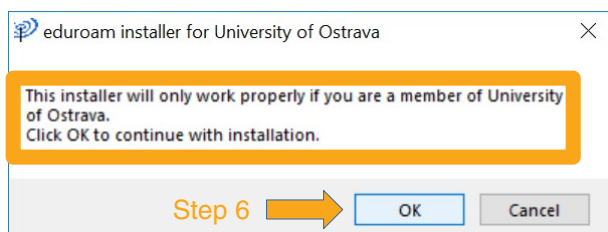
1.5. Starting the installation

Run the downloaded file and continue the setup and installation process by clicking on the **Next** button (screenshot 5).



Screenshot 5

Check if the installer is prepared for the University of Ostrava. If you have not downloaded the right version, see chapters 1.1 and 1.2 of this guide. Click on the **OK** button to continue (screenshot 6).

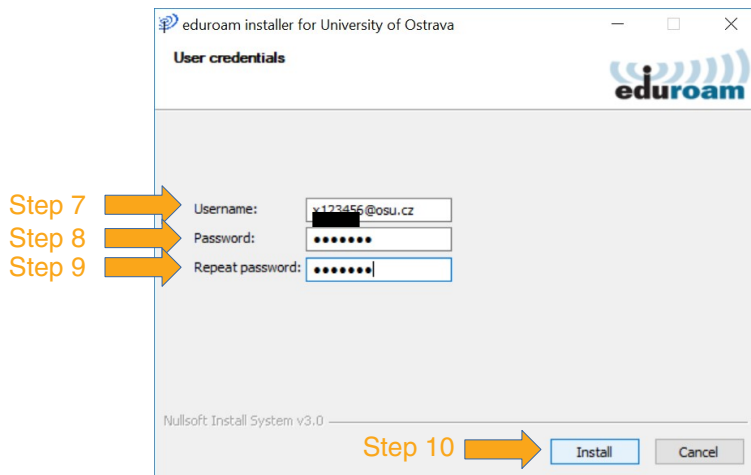


Screenshot 6

1.6. User-name and password

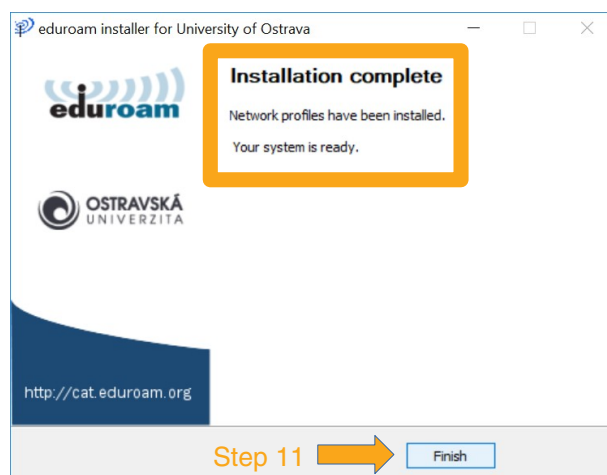
You have to set your eduroam password on the University of Ostrava Portal before doing anything else. Go to the page <https://portal.osu.cz> → **My page** → **Password change** → **eduroam password**. You need to have an active student account to log on. Your student account password and your eduroam password have to be different. Use the same username you use to connect to the Portal or email (e.g. **studja35@osu.cz**) and the password you created in the previous step.

Fill in your eduroam username and eduroam password twice and click on the **Install** button (screenshot 7).



Screenshot 7

Check the result of the installation. The installation and settings are complete now, so you can close the **eduroam CAT** application by clicking on the **Finish** button (screenshot 8). There is no need to run the application again.



Screenshot 8

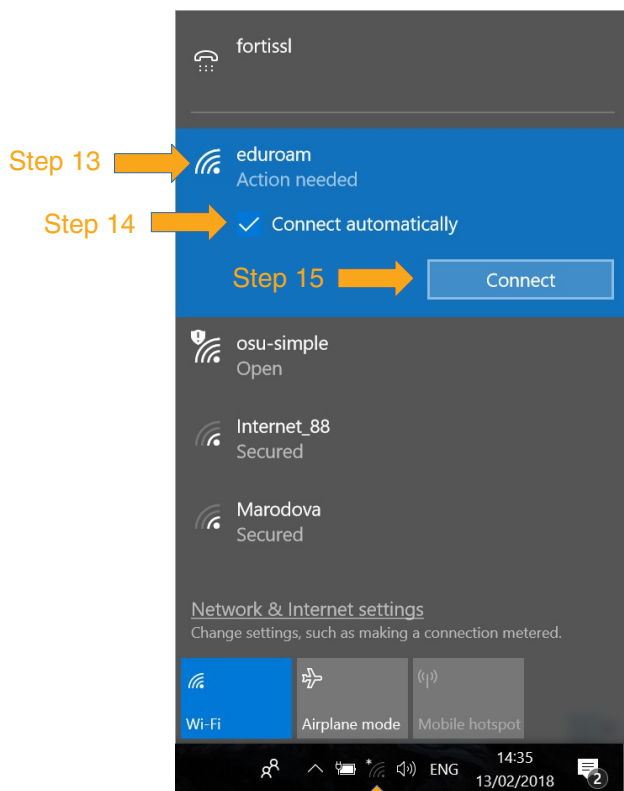
If the profile installation fails, try to remove an existing configured connection named eduroam; see **Start** → **Settings** → **Network & Internet** → **Wi-Fi** → **Manage known networks** → **eduroam** → **Remove**.

1.7. Connecting

First, the Wi-Fi adapter has to be enabled. If you have installed your profile and set your username and password correctly, your device should successfully connect to a nearby eduroam Wi-Fi network in the next step.

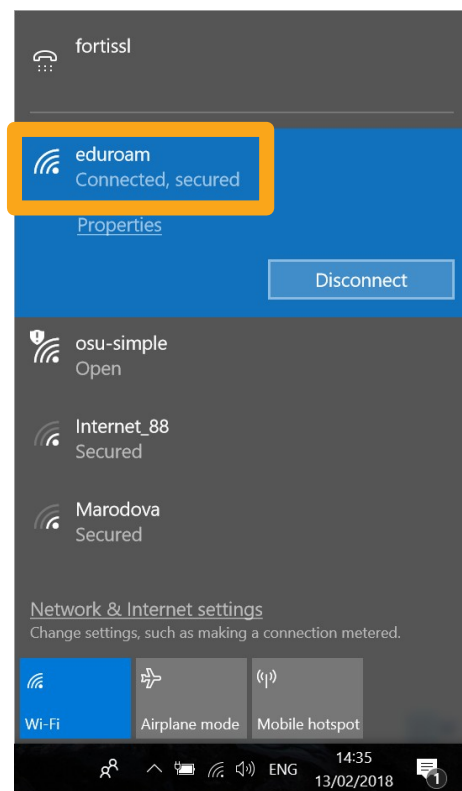
Open the **Internet Connection** panel (Wi-Fi icon) in the **Status Bar**, select the **eduroam** connection, tick the **Connect automatically** option and click on the **Connect** button (screenshot 9).

Check the **eduroam** connection status; you should see **Connected, secured** (screenshot 10). That's all.



Screenshot 9

Step 12



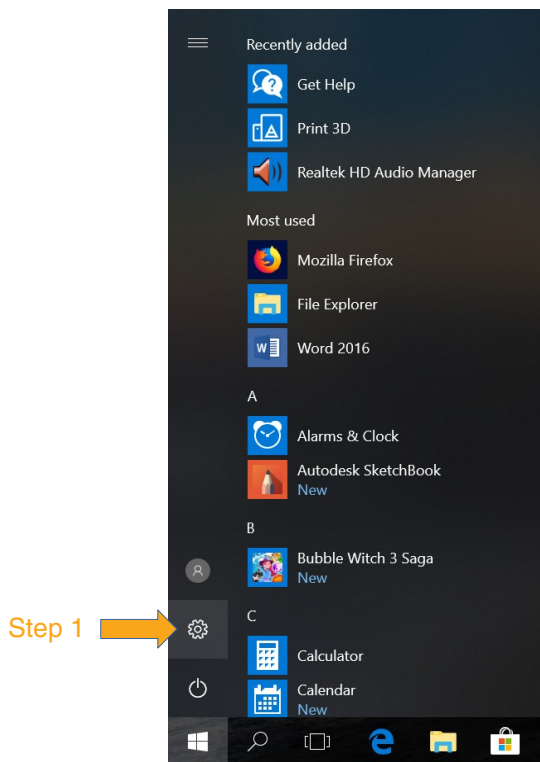
Screenshot 10

2. Manual eduroam setup

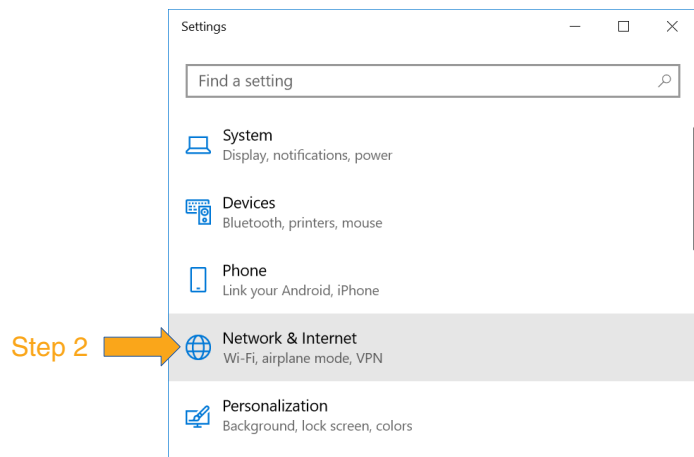
WARNING: This setup is more complicated and is not recommended for less skilled users; instead use the guided configuration with the eduroam Configuration Assistant Tool - chapter 1.

2.1. Creating a new connection

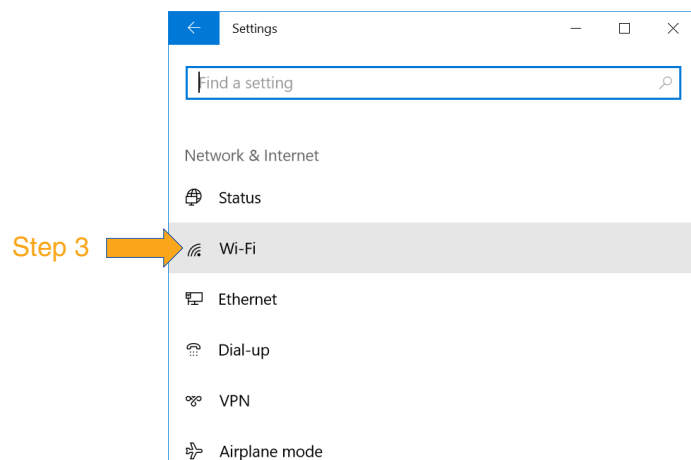
Go to **Start** → **Settings** → **Network & Internet** → **Wi-Fi** (screenshots 11-13).



Screenshot 11



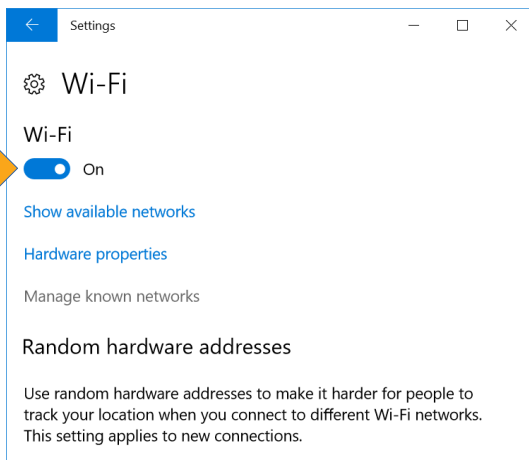
Screenshot 12



Screenshot 13

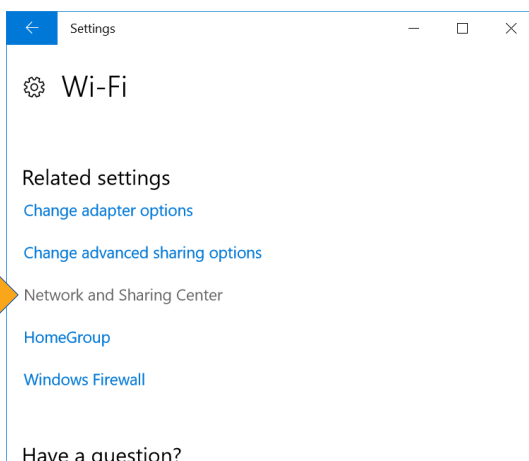
Turn on the Wi-Fi adapter and go to the **Network and Sharing Center** (screenshots 14 and 15).

Step 4



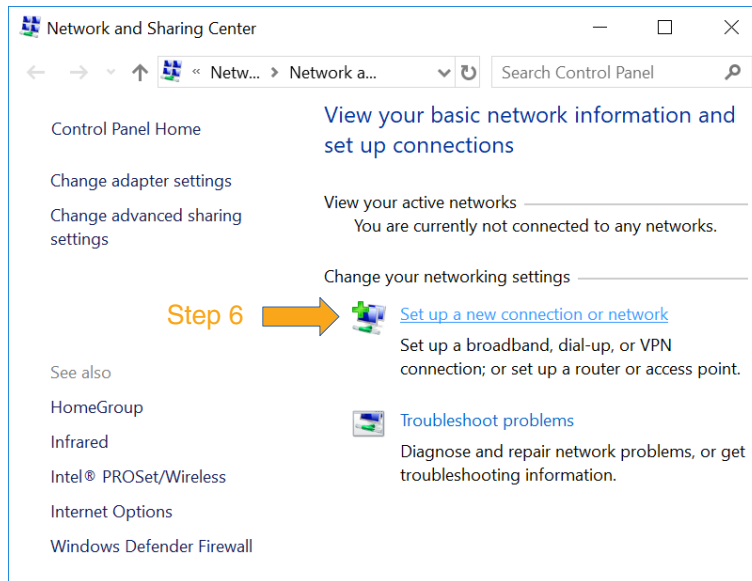
Screenshot 14

Step 5

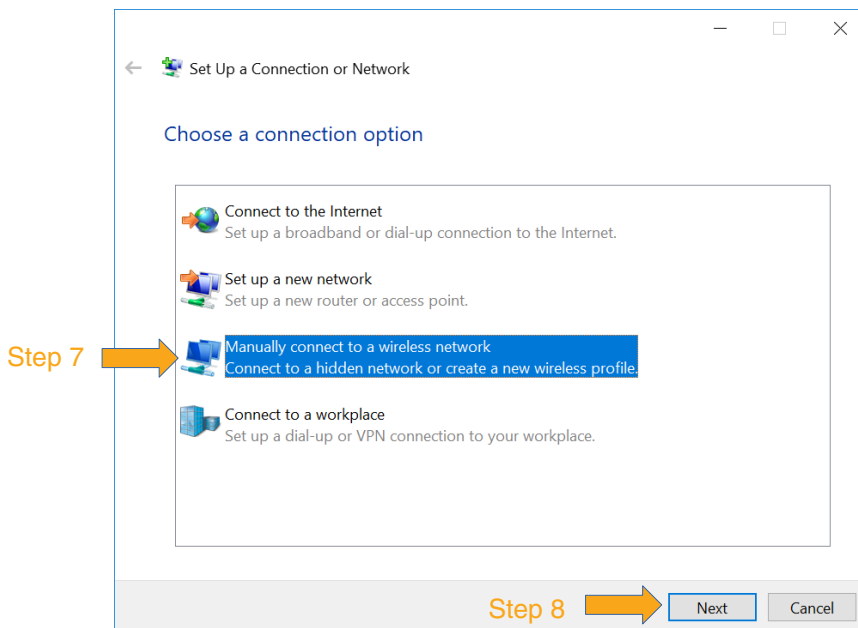


Screenshot 15

Create a new connection: click on **Set up a new connection or network**, select **Manually connect to a wireless network** and click on the **Next** button (screenshots 16 and 17).



Screenshot 16



Screenshot 17

Fill in these options:

- Network name: **eduroam**
- Security type: **WPA2-Enterprise**
- Encryption type: **AES**

And tick **Start this connection automatically**. Continue by clicking on the **Next** button to add it (screenshot 18).

Manually connect to a wireless network

Enter information for the wireless network you want to add

Network name: ← Step 9

Security type: ← Step 10

Encryption type: ← Step 11

Security Key: ☐ Hide characters

☒ Start this connection automatically ← Step 12

☐ Connect even if the network is not broadcasting

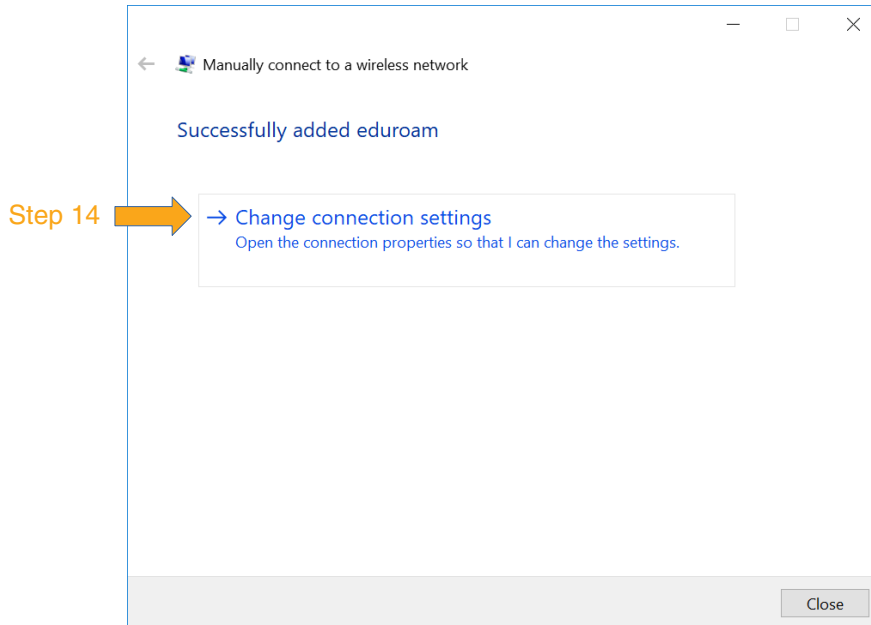
Warning: If you select this option, your computer's privacy might be at risk.

Step 13 →

Screenshot 18

2.2. Modifying the connection

If the eduroam connection is successfully added, select **Change connection settings** (screenshot 19).



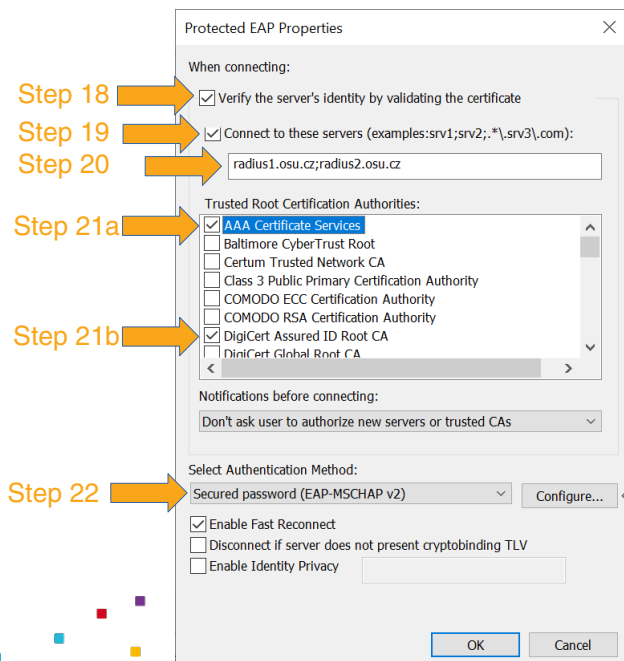
Screenshot 19

Go to the **Security** tab.

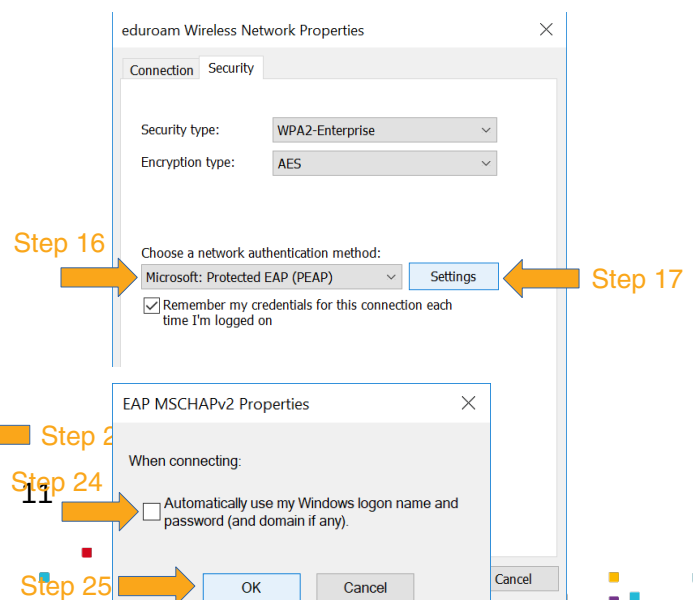
Check if the network authentication method is set to **Microsoft: Protected EAP (PEAP)**. Click on the **Settings** button. Set the correct **Protected EAP Properties**:

- tick **Verify the server's identity by validating the certificate**,
- tick **Connect to these servers**
- and fill in **radius1.osu.cz;radius2.osu.cz**,
- tick **GEANT OV RSA CA 4** and **AAA Certificate Services**,
- select the authentication method **Secured password (EAP-MSCHAP v2)**.

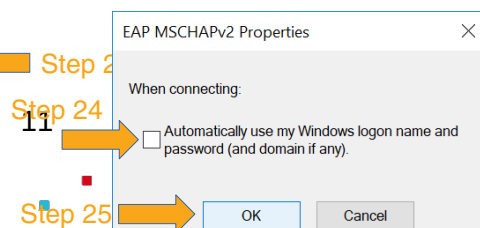
Click on the **Configure** button and go to **EAP MSCHAPv2 Properties**, disable **Automatically use my Windows logon name and password (and domain if any)** and click on the **OK** button (screenshots 20-23).



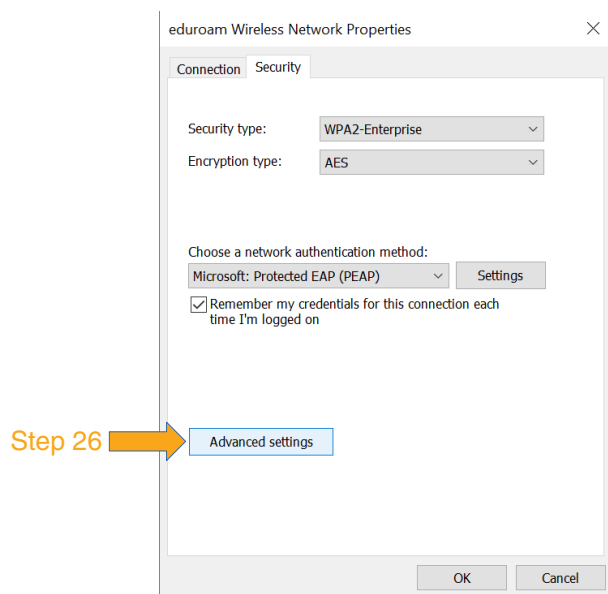
Screenshot 20



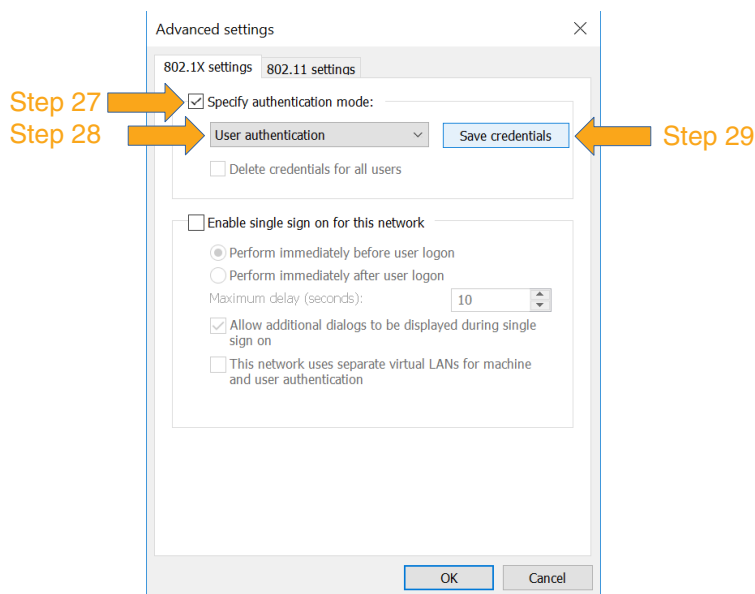
Screenshot 23



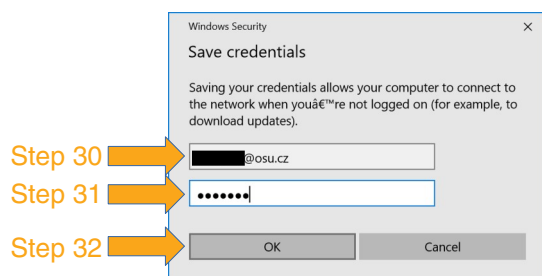
Click again on the **OK** button and you will be back in **eduroam Wireless Network Properties**. Click on the **Advanced settings** button. Tick **Specify authentication mode** on the **802.1X settings** tab, select **User authentication** and click on the **Save credentials** button. Fill in your user-name and password and click on the **OK** button (screenshots 24-26). Confirm and close all open windows by clicking on the **OK** or **Close** button, not the **Cancel** button, and setup is now complete.



Screenshot 24



Screenshot 25



Screenshot 26

2.3. Connecting

If you have set all the settings, your username and your password correctly, your device should automatically connect to a nearby eduroam Wi-Fi network.

Open the **Internet Connection** panel (Wi-Fi icon) in the **Status Bar**, check the **eduroam** connection status, and you should see **Connected, secured** (screenshot 10 in chapter 1.7.). That's all.

3. Trouble-shooting

3.1. Some tips on how to solve problems

- Set a new eduroam password via University Portal at <https://portal.osu.cz>.
- Check your eduroam username; it has to contain the domain @osu.cz, not @student.osu.cz. Check for prefixed or suffixed spaces in the username.
- Remove the old eduroam connection or profile and create a new one.
- Installation of the configuration application requires activated screen lock (pin, gesture, password, fingerprint, face recognition)
- Update your operating system and/or Wi-Fi adapter driver.
- Microsoft Windows 95, 98, NT, 2000, XP are not supported; upgrade to a newer one.

3.2. Technical support and information resources

- Write an email to the University helpdesk eduroam@helpdesk.osu.cz
- Visit the Centre for Information Technology at Brafova 5 in Ostrava city centre and ask the wireless network administrator for help.
- Website <https://eduroam.osu.cz>.
- Website <https://www.eduroam.cz>.